



WELCOME TO ESTES PARK CENTER

WHERE NATURE INSPIRES

CHECK OUT: 10 AM

QUIET HOURS: 11 PM–7 AM

QUESTIONS OR NEED ASSISTANCE?: Dial 0 on any YMCA landline, 24/7

INTERNET ACCESS Wireless internet is available in all buildings. There is no password. Just go into your device's settings and select "YMCA Guest" or "YMCA Cabins" network.

IMPORTANT CONTACTS

Front desk/assistance

Dial 0 on any YMCA landline, 24/7

Post Office | x1124

Mon.–Fri. 11:30 AM–3:30 PM

Sat. 11:30 AM–2:30 PM

General Store | x1015

Sun.–Thu. 9 AM–5 PM

Fri.–Sat. 9 AM–7 PM

DINING & FOOD

ASPEN DINING HALL

A year-round, all-you-care-to-eat buffet with vegan, gluten-free, and vegetarian options. Meals include a salad bar, entrees, dessert, and beverages.

Breakfast | 7 AM–9 AM

Adults (13+) | \$15

Children | \$8

5 and younger | Free

Lunch | 11 AM–1 PM

Adults (13+) | \$19

Children | \$11

5 and younger | Free

Dinner | 4:30 PM–7 PM

Adults (13+) | \$21.50

Children | \$15

5 and younger | Free

RUSTIC CAFE | HOURS VARY

Enjoy a variety of breakfast, lunch and snacks at our counter located in the Administration Building

THE PINE ROOM RESTAURANT

(summer only)

An a la carte dining with comfort food, a prime rib buffet, Sunday brunch, and rotating menus. Ideal for families and small groups. Prices vary.

Lunch | 11:30am–3pm

(Monday–Friday)

Dinner | 4:30pm–8pm

(Tuesday–Saturday)

Brunch: 11am–2pm

(Sundays only)

PAYMENT FOR FOOD & ACTIVITIES

Accepted methods: Cash, credit/debit card, charge to room

ACTIVITIES AND PROGRAMS



Activities include indoor climbing, craft shop, archery, pet-friendly hiking trails and our new aerial challenge course. **ADVANCE RESERVATIONS REQUIRED FOR SOME ACTIVITIES:** Call 970-586-3341 ext. 1104 or scan the QR code to sign up!

STAY INFORMATION



Linen Exchange: Lower level of Longhouse, 8 AM–4:30 PM daily. If closed, visit Housekeeping Office next door, same hours. Dial 0 for assistance.



Recycling: Receptacles in lodges and cabins. Recycle paper, cardboard, cans, glass and plastic bottles.



Trash: Place in bear-proof bins outside cabins. Dial 0 for bin emptying.



Guest Laundry: Lower level of Longhouse, open 24/7



Speed Limits: 20 mph on roads, 10 mph in parking lots

DONATE



Help us continue our mission by donating today. Your support ensures we can keep serving families and youth for years to come. Thank you for your generosity!

CHECK OUT INFORMATION

KEY DROP-OFF: Boxes at Administration Building entrance, by tennis courts or leave in room.

POST CHECK-OUT: Enjoy grounds and activities for the rest of the day.

FINAL BILL: Emailed on departure morning.

POLICIES

SMOKING | Only in designated areas outside main buildings.

ALCOHOL | Permitted only in personal accommodations or meeting spaces.

MARIJUANA | Not allowed on properties or in facilities.

ESTES PARK CENTER

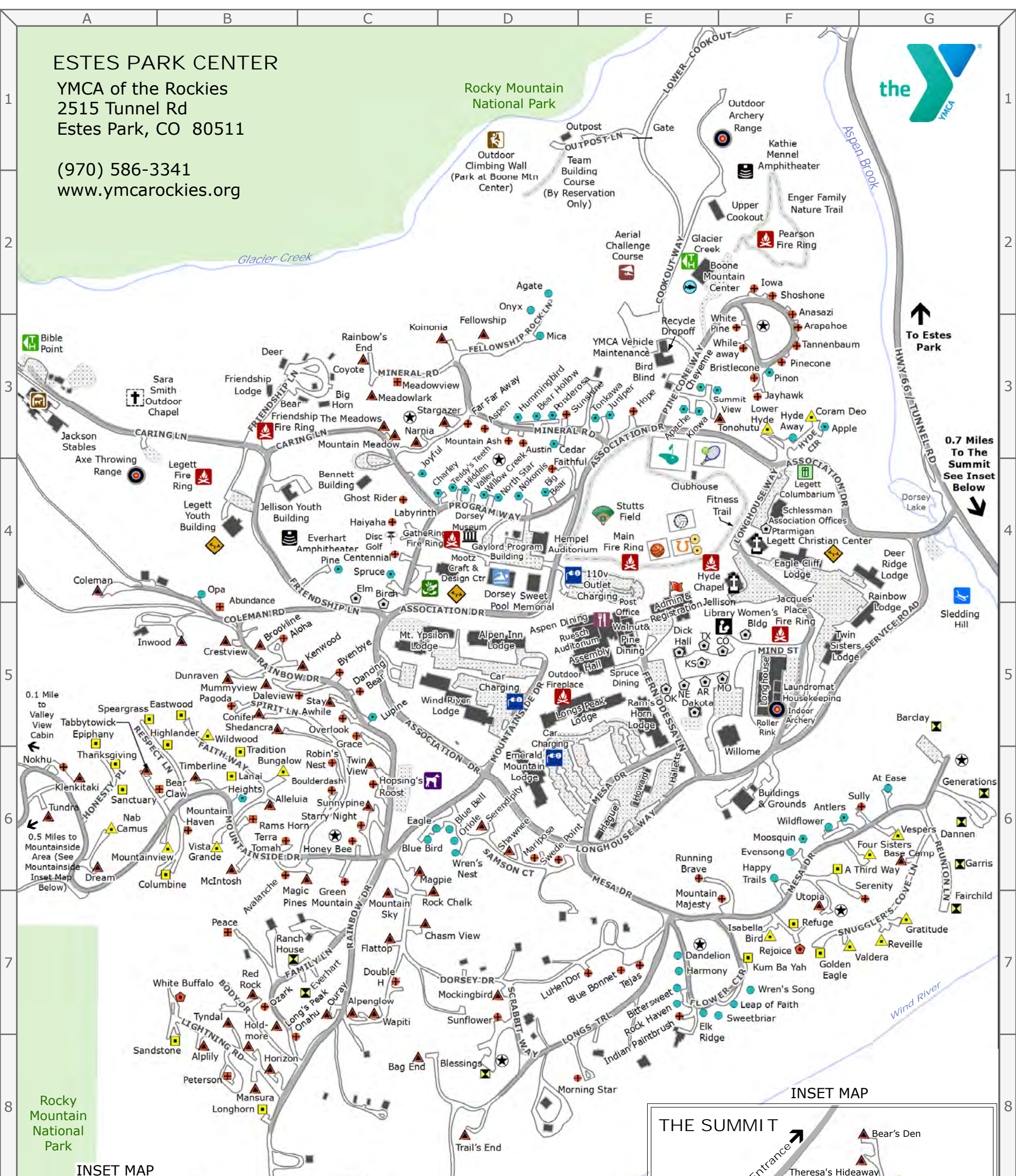
YMCA of the Rockies
2515 Tunnel Rd
Estes Park, CO 80511

(970) 586-3341
www.ymcarockies.org



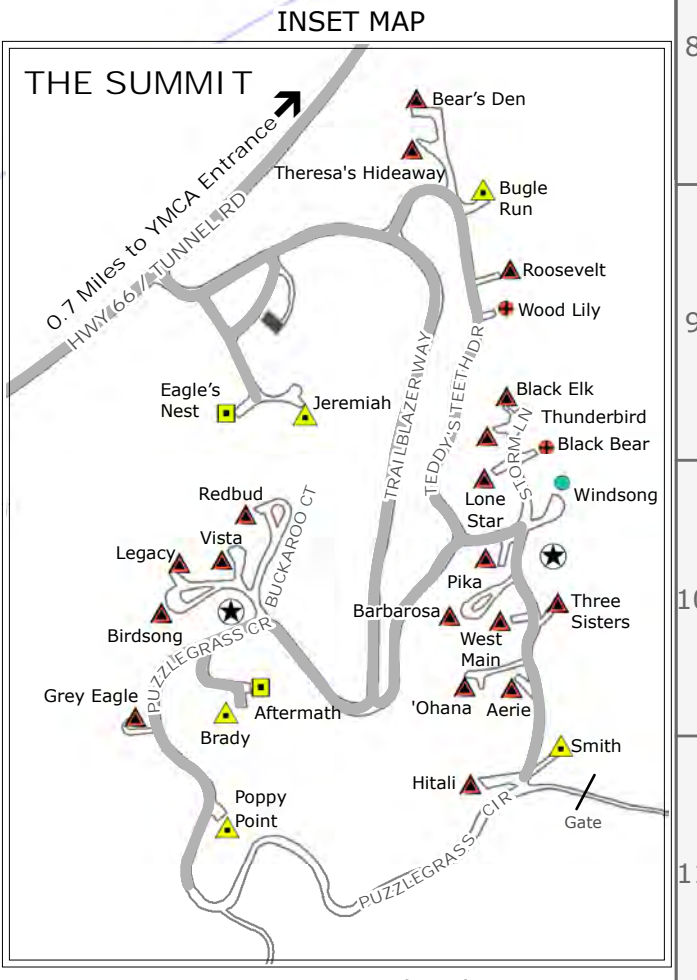
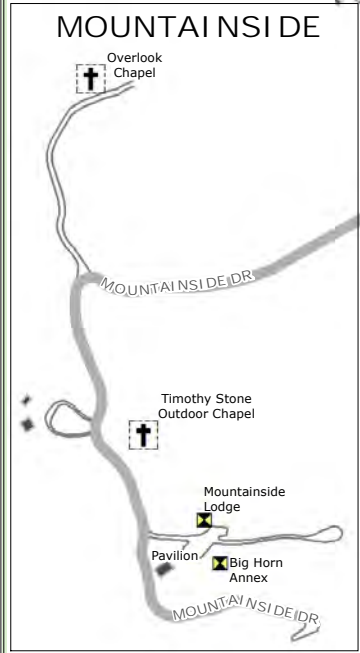
Rocky Mountain National Park

Outdoor Climbing Wall (Park at Boone Mtn Center)
Outpost
Team Building Course (By Reservation Only)

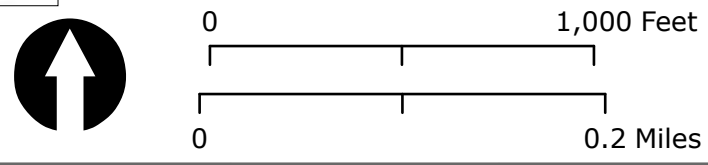


To Estes Park

0.7 Miles To The Summit See Inset Below

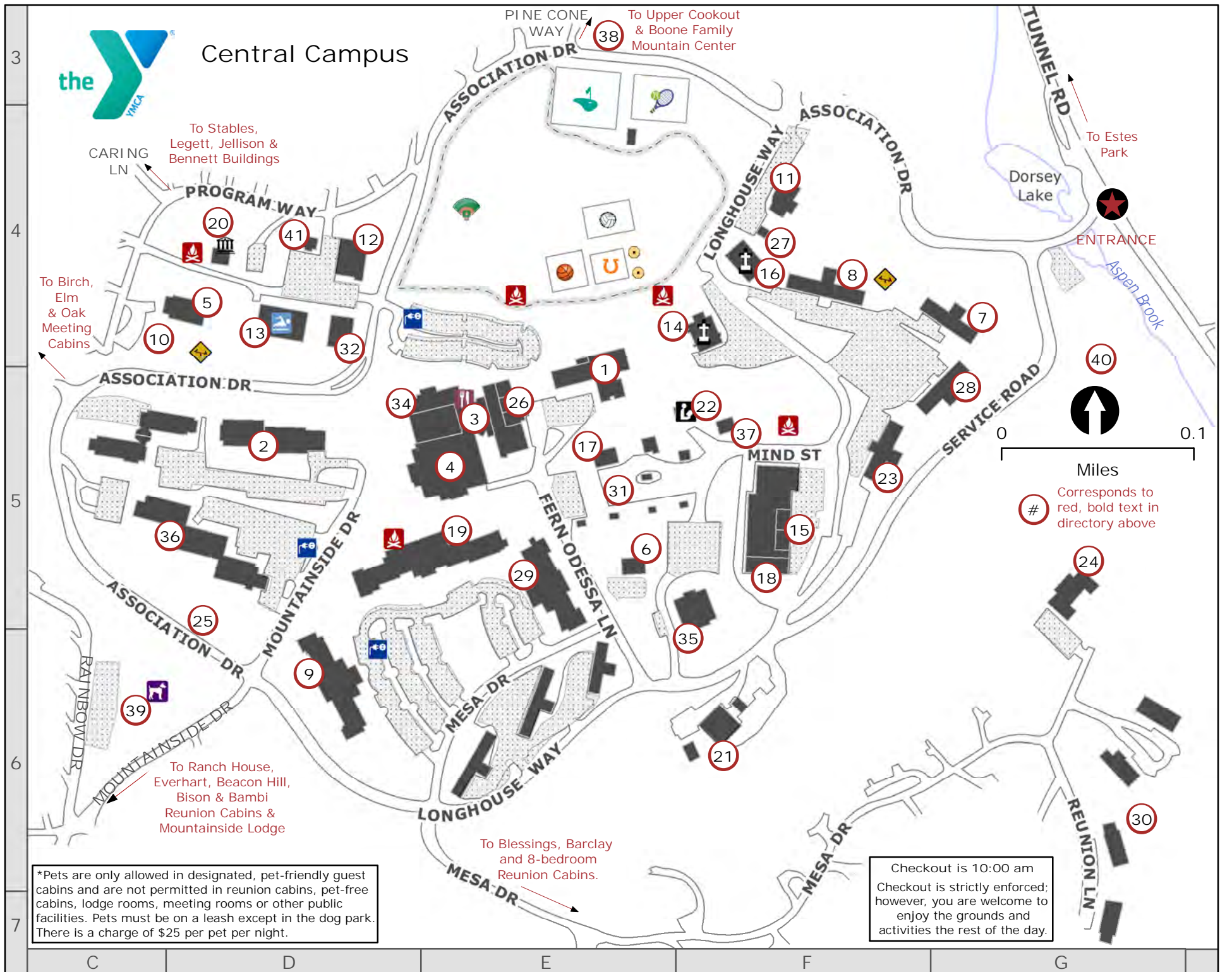


CABINS			
	2 Bedroom Basic		5 Bedroom w/ Fireplace
	2 Bedroom Midsize		3 Bedroom Plus
	2 Bedroom w/ Fireplace		4 Bedroom Plus
	3 Bedroom w/ Fireplace		Reunion Cabin
	4 Bedroom w/ Fireplace		Meeting Cabin
PROGRAMS & ACTIVITIES			
	Aerial Course		Columbarium
	Amphitheater		Dining
	Archery Range		Disc Golf Start
	Baseball Field		Dog Park
	Basketball Court		Fire Ring
	Car Charging Station		Fly Fishing
	Indoor Chapel		Gaga Ball
	Outdoor Chapel		Gathering Area
	Outdoor Classroom		Horseshoes
	Climbing Wall		Library
	Stables		Mini Golf
	Museum		Playground
	Indoor Pool		Sledding Hill
	Tennis Court		Trailhead
	Volleyball		



Updated May 23, 2024

Guest Cabins & Lodging					Programs & Activities								
A Third Way	6F Dream	6A Lower Hyde	3F Running Brave	6E Administration Building- 1	5E Leggett Legacy Garden	4F	Abundance	B5 Dunraven	5B LuHenDor	7E Sanctuary	6A Archery Ranges	1F,4A,5F Leggett Youth Building	4B
Aerie	10G Eagle	6C Lupine	5C Sandstone	8B Arkansas Meeting Cabin	5E Livery Fire Ring	8F	Aftermath	10F Eagle Cliff Lodge- 8	4F Magic Pines	6C Serendipity	6D Aspen Dining Hall- 3	5E Longhouse- 18	5F
Agate	2D Eagle's Nest	9F Magpie	6C Serenity	7G Assembly Hall- 4	5E Main Fire Ring	4E	Alleluia	2B Eastwood	5B Mansura	8B Shawnee	6D ATM- 1	5E Marmot Manor	4B
Aloha	5B Elk Ridge	7E Mariposa	6D Shedanra	5B Barclay Retreat Cabin- 24	5G Maude Jellison Library- 22	5F	Alpen Inn Lodge- 2	5D Emerald Mtn Lodge- 9	6D McIntosh	6B Shoshone	2F Basketball Court	4E Mini Golf	3E
Alpenglow	7C Epiphany	5A Meadowlark	3C Smith	2F Bear (Friendship Lodge)	3C Missouri Meeting Cabin	5F	Alplyly	8B Evensong	6F Meadows, The	3C Speargrass	5A Beech (Livery)	3A Moonshadow	4A
Anasazi	3F Everhart Reunion Cabin	7C Meadowview	3C Spruce	4C Bennett Building	4C Mootz Family Craft & Design Cntr- 5	4D	Antlers	6F Fairchild Reunion Cabin	7G Mica	3D Stargazer	3D Bible Point Trailhead	3A Mount Ypsilon Staff Lodge	5C
Apache	3E Faithful	4D Mockingbird	7D Starry Night	3D Mounting View	3A Mount Ypsilon Lodge	11A	Apple	3F Far Far Away	3D Moosquin	6F Stay Awhile	6C Big Horn (Friendship Lodge)	3C Mountainside Lodge	11A
Arapahoe	3F Fellowship	3D Morning Star	8D Sully	6G Birch Meeting Cabin	5C Nature Explore Outdoor Clssrm- 10	4D	Aspen	3D Flattop	7C Mountain Ash	3D Summit View	3E Bob Ecker Roller Rink	5F Nebraska Meeting Cabin	5E
At Ease	6G Four Sisters	6G Mountain Haven	6B Sunflower	7D Boone Family Mountain Cntr- 38	2E Oklahoma Meeting Cabin	5E	Austin	3D Garris Reunion Cabin	6G Mountain Majesty	7F Sunnypine	6C Buildings & Grounds Office- 21	6F Outdoor Climbing Wall	1D
Avalanche	6B Generations Reunion Cabin	6G Mountain Meadow	3C Sunshine	6C Colorado Meeting Cabin	5F Outpost Youth Building	1D	Bag End	8C Ghost Rider	4C Mountain Sky	7C Swede Point	6D Conference Office - 1	5E Overlook Chapel	9A
Barbarosa	10G Golden Eagle	7F Mountainside Lodge	7A Sweetbriar	7F Coyote (Friendship Lodge)	3C Peaceful Pines Duplex	3E	Barclay Reunion Cabin	5G Grace	5C Mountainview	6B Tabbytowick	6A Dannen Chapel- 16	4F Pearson Fire Ring	2F
Base Camp	6G Gratitude	7G Mummyview	5B Tannenbaum	3F Dannen Library- 16	4F Photo Park- 25	5C	Bear Claw	6B Green Mountain	6C Nab Camus	6A Teddy's Teeth	4D Dakota Meeting Cabin- 6	5E Pine Room Restaurant- 26	5E
Bear Hollow	3D Grey Eagle	10F Narnia	3C Tejas	7E Deer (Friendship Lodge)	3B Playground	4B,4D,4F	Bear's Den	8F Haiyaha	4C Nokhu	6A Terra Tomah	6B Dick Hall- 17	5E Ponder Chapel- 16	4F
Big Bear	4D Happy Trails	6F Nokomis	4D Thanksgiving	6A Disc Golf Start	4C Post Office- 26	5E	Big Horn Annex	7A Harmony	7E North Star	4D Theresa's Hideaway	8F Dorsey Museum- 20	4D Ptarmigan Meeting Cabin- 27	4F
Birdsong	10F Heights	6B 'Ohana	10G Three Sisters	10G Duncan Clubhouse	4E Rainbow Duplex	7B	Bittersweet	7E Hidden Valley	4D Onahu	8B Thunderbird	9G Elm Meeting Cabin	4C Retreat Cabins (8-Bedroom)- 30	6G
Black Bear	9G Highlander	5B Onyx	2D Timberline	6B Everhart Day Camp Amphitheater	4B Recycle Dropoff	3E	Black Elk	9G Hitali	11G Opa	4B Tonkawa	3E Forest Grove	7B Ruesch Auditorium- 34	5E
Blessings Reunion Cabin	8D Holdmore	8B Oriole	6D Tonohutu	3F Friendship Fire Ring	3B Sara Smith Outdoor Chapel	3A	Blue Bell	6D Honey Bee	6C Ouray	7C Tradition	6B Friendship Staff Lodge	3B Sasquatch Fly Fishing	2E
Blue Bird	6C Hope	3E Overlook	5C Trail's End	8D Gaga Ball	4E Schlessman Association Offices- 11	4F	Blue Bonnet	7E Hopsing's Roost	6C Ozark	7B Tundra	6A GatheRing Fire Ring	4D Singing Pines	7C
Boulderdash	6C Horizon	8B Pagoda	5B Twin Sisters Lodge- 23	8F Gaylord Program Building- 41	4D Sledding Hill - 40	4G	Brady	10G Hummingbird	3D Peace	7B Twin View	6C General Store- 1	5E Spruce Dining Hall	5E
Bristlecone	3F Hyde Away	3F Peterson	8B Tyndal	7B Glacier Creek Trailhead	2E State Meeting Cabins (see front)- 31	5E	Brookline	5B Indian Paintbrush	7E Pika	10G Utopia	7F Group Reservations Office- 11	2F Stutts Field	4E
Bugle Run	9G Inwood	5B Pine	4C Valdera	7F Guest Check-in- 1	5E Sweet Memorial Program Bldg- 32	4D	Bungalow	6B Iowa	2F Pinecone	3F Valley View	5A Hague Staff Lodge	6E Tennis Court	3E
Byenbye	5C Isabella Bird	7F Piñon	3F Vespers	6G Halletts Staff Lodge	6E Texas Meeting Cabin	5E	Cedar	3D Jayhawk	3F Ponderosa	3D Vista	10F Haywood	9F Timothy Stone Outdoor Chapel	10A
Centennial	4C Jeremiah	9F Poppy Point	11F Vista Grande	6B Hempel Auditorium- 12	4D Upper Cookout- 38	2E	Charley	4D Joyful	4C Rainbow Lodge - 28	5G Wapiti	7C Henry Dorsey Memorial Pool- 13	4D Volleyball Court	4E
Chasm View	7C Juniper	3E Rainbow's End	3C West Main	10G Horseshoes	4E Walnut Dining Room	5E	Cheyenne	3E Kenwood	5C Ram's Horn	6B Whileaway	3F Housekeeping Office	5F Whispering Pines	7C
Coleman	4A Kiowa	3E Ram's Horn Lodge- 29	5E White Buffalo	7B Howard Staff Lodge	6E Willome Conference Center- 35	5F	Columbine	6B Klenkitaki	6A Ranch House	7B White Pine	3F Hyde Chapel- 14	4F Women's Meeting Building- 37	5F
Conifer	5B Koinonia	3D Red Rock	7B Wildflower	6F Hyde Chapel Fire Ring	4E YMCA Vehicle Maintenance	3E	Coram Deo	3F Kum Ba Yah	7F Redbud	10F Wildwood	5B Jacques' Place Fire Ring	5F	
Crestview	5B Lanai	6B Refuge	7F Willow Creek	5D Jackson Stables	3A *Campfires are permitted in designated campfire sites only; dial 1104 for availability and pricing. Charcoal grills are prohibited.								
Daleview	5C Leap of Faith	7F Rejoice	7F Wind River Lodge- 36	4D Jellison Youth Building	*Do not attempt to feed or approach wild animals. Please use bear-proof trash cans for afternoon collection. DO NOT leave food outside in coolers, on window sills or in cars.								
Dancing Bear	5C Legacy	10F Reveille	7G Windsong	10G Kansas Meeting Cabin									
Dandelion	7E Lone Star	10G Robin's Nest	6C Wood Lily	9G Kathie Mennel Amphitheater									
Dannen Reunion Cabin	6G Longhorn	8B Rock Chalk	6C Wren's Nest	6D Labyrinth									
Deer Ridge Lodge- 7	4G Long's Peak	7B Rock Haven	7E Wren's Song	7F Laundromat/Linen Exchange-15									
Double H	7C Longs Peak Lodge- 19	5E Roosevelt	9G	6D Leggett Christian Center- 16									
				7F Leggett Fire Ring									



YMCA OF THE ROCKIES WILDLIFE SAFETY



Please respect all wildlife to ensure your safety and theirs.

- Give wildlife plenty of space and do not approach, especially when pets are present.
- Never feed wildlife, including birds and chipmunks. It is illegal and harmful to the animal.
- Do not leave food or trash out on counters or tables in cabins or in vehicles.
- Keep children and pets close by when walking or hiking in areas wildlife could be.
- Notify YMCA staff of all bear, mountain lion or wolf sightings on YMCA property immediately. Dial "0" on cabin phones.

BEAR SAFETY

Bears may be present on YMCA property at any time, day or night. Bears have been known to enter unoccupied guest cabins or unlocked vehicles. Please do your part to avoid having an uninvited guest in your cabin or vehicle, by following these tips:

- Remove trash from your cabin daily and place it in the bear-proof trash container located outside each cabin and ensure the lid is latched.
- Bird feeders, including hummingbird feeders are not allowed at cabins, as these attract bears.
- Ensure vehicle doors are locked and windows are up at all times.
- Close and lock all cabin windows at night, especially kitchen, dining room and bathroom windows.

ELK & MOOSE SAFETY

Elk and moose are wild animals and should not be approached. Though they may allow humans to get close to them, they will react unexpectedly to intrusion of their space, which can cause serious injuries to humans. Follow these tips to safely observe elk and moose:

- Keep a distance of at least 75 feet or two bus lengths between you and elk or moose.
- If an elk or moose notices you or raises its head to you, you are too close.
- Do not get between a bull elk/moose and his herd or a mother elk/moose and her calf.
- Do not become surrounded by a herd of elk and do not surround an elk; leave an obvious escape route.
- Be extra careful during spring calving season and fall mating season. Elk and moose are more aggressive during these times.

MOUNTAIN LION SAFETY

Mountain lions may be present on YMCA property. Follow these tips to ensure a safe coexistence between you and mountain lions.

- Walk and hike in groups. Mountain lions are most active at dawn and dusk.
- If you see a mountain lion, stay calm, move slowly and talk firmly to it. Stop and back away slowly, if you can do so safely.
- Running may stimulate a lion's instinct to chase and attack.
- Do all that you can to appear larger; raise your arms, open your jacket.
- Pick up children to protect them so they don't panic and run.
- If a mountain lion behaves aggressively, throw stones, tree branches, whatever you can grab without crouching down or turning your back. You want to convince the mountain lion you are not prey and that you may be a danger to the lion.
- If a mountain lion attacks you, fight back. Mountain lions have been driven away by prey that fights back. Remain standing or try to stand back up if you fall down.

WOLF SAFETY

While there have been no guest or staff sightings of wolves on Snow Mountain Ranch property, we are in contact with Colorado Parks and Wildlife to monitor the presence of wolves in Grand County and on our 5,100-acre Granby property. We always encourage our guests to practice safety when encountering wildlife of any kind – giving the animals plenty of space and respecting their environment. Though it is rare for a wolf to pose a threat to a human, it is better to be prepared. Follow these tips to ensure a safe coexistence between you and wolves.

- Make noise when you come and go at night.
- Most wolves will try to avoid a confrontation. Give them a way to escape.
- If you do encounter a wolf, maintain visual contact so you can see what it is doing and where it is.
- Talk calmly yet firmly to it and make enough eye contact so that it knows you have seen it. Most wolves will run away.
- If you have a dog with you, keep the dog away from the wolf.
- If there is shelter or a vehicle nearby, face the wolf and stand upright while backing away slowly. Running may stimulate a predatory instinct to chase and attack.
- If you cannot retreat, stand your ground, face the wolf and try to appear larger. For example, raise your arms, stand on a stump or a rock or open your jacket. Place obstacles you may have, like a bike, between you and the wolf.
- In the very unlikely event that a wolf attacks you, fight back. Remain standing, and try to get back up if you are knocked down.



ENJOYING YOUR STAY AND WANT TO PAY IT FORWARD?

DONATE TODAY!

YMCA of the Rockies is a nonprofit providing enriching year-round outdoor experiences for families and youth. Your donation supports our mission and provides donor-sponsored getaways to families carrying especially heavy loads and in critical need of respite.



Scan To Donate Online
[ymcarockies.org /give](https://ymcarockies.org/give)



EASY OPTIONS
TO DONATE

venmo

@YMCA_of_the_Rockies

OUR MISSION

YMCA of the Rockies puts Christian principles into practice through programs, staff, and facilities in an environment that builds healthy spirit, mind, and body for all. We will accomplish this by serving conferences of a religious, educational, or recreational nature, providing unifying experiences for families, offering character building and life-enriching experiences for today's youth, and serving our staff with leadership opportunities and productive work experiences.

Thank you for supporting YMCA of the Rockies! Nonprofit Tax ID# 84-0404913



LAST YEAR YMCA OF THE ROCKIES GUESTS AND SUPPORTERS HELPED PROVIDE OVER 2,140 DONOR-SPONSORED GETAWAYS!

Annual fund donations provide getaways to groups of families carrying especially heavy loads and in critical need of respite.

In 2023, that included stays for:

- 1,320 Teacher Families
- 634 Military Families
- 12 Families affected by critical childhood illness
- 97 Foster Families
- 51 Faith Leader Families
- 31 Single-Parent Families

Plus, 179 gift certificates to support schools & nonprofit fundraisers

Donor-Sponsored Getaways Offered in 2024 Thanks To Generous Donations

These getaway programs are offered at a free or reduced rate



Teacher Recess offers rest and rejuvenation for K-12 school staff who have been challenged over recent years. As a thank you, we are welcoming K-12 school employees to have their own "recess" in the Rocky Mountains.



Mission 623, for families that are facing deployment or reconnecting after returning home from active duty.



Foster the Future recognizes foster parents are special people. They open their hearts and homes to children in need of a safe, nurturing place to live.



G.R.A.C.E., Giving Respite and Comfort to Everyone, allows families affected by childhood critical illness to reconnect, enjoy the beauty of the Rocky Mountains, and form lasting memories.



Connect 50 gives single parent families the opportunity to spend restful time away together.



202 Days provides faith leaders time for reflection and reconnection.



“ Thank you so much for this amazing opportunity to stay at the YMCA of the Rockies! It was a much-needed chance to relax and enjoy the peaceful mountains with our family, away from our crazy lives. Our daughter, diagnosed with leukemia a year ago, was excited to play like a normal kid, and loved all of the activities. She has already asked to come back every year!

WENDY, G.R.A.C.E. GUEST



Make a gift of any amount and provide respite for those who need it most.
Use these easy options to give today:



Scan To Give Online
ymcarockies.org/give

venmo
@YMCA_of_the_Rockies



MEMBERSHIP MAKES MEMORIES

**Enjoy lodging perks & discounts,
activities and programs!**

- Access to all recreational programs & facilities at both Estes Park Center and Snow Mountain Ranch, including cross country ski trails and facilities at the Snow Mountain Ranch Nordic Center
- Cabin reservation priority based on member year and rate lock by booking season for lodging costs
- Discount at YMCA General Stores
- Discount for your child or teen to attend Camp Chief Ouray - a traditional overnight summer camp
- Advanced registration for summer Day Camp
- A shared connection and sense of belonging to the YMCA community, providing more than 100 years of service

Membership includes you, a spouse/partner, any dependent children you have, and any related family members living in your household. Financial assistance for memberships is available.



RATES
1 Year-\$300
3 Years-\$800



Membership Office:
970-586-8121

LEARN MORE
ymcarockies.org/membership



Membership fees are not tax deductible. Membership does not guarantee a reservation as reservations are processed based upon membership year.



ADOPT A CABIN AT ESTES PARK CENTER

Cabins at YMCA of the Rockies are donated by amazing families and individuals just like you. Cabin adoption provides you and your family a way to build traditions for years to come while making it possible for other families to enjoy this same opportunity.

Special Opportunity in Historic Mineral Group

2 Bed, 1 Bath, Sleeps 4, New Construction Starting in the high \$300,000s

A small group of cabins ideally situated near the center of campus. These cabins are close to activities, but secluded enough to provide your quintessential mountain escape. Our most affordable option, these two-bedroom cabins sleep four and feature a cozy floorplan (648ft²). Contact us to tour future building sites.

Available cabins include Crystal and Granite.



Scan to learn more or visit
ymcarockies.org/give

View Available Cabins >>>

CABINS AVAILABLE FOR ADOPTION

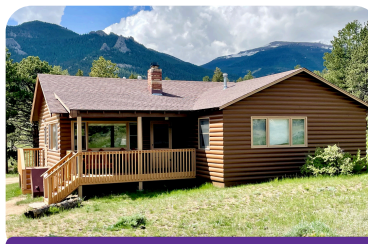
Pricing valid through May 31, 2025



TONOHUTU

**3 Bed, 2 Bath, Fireplace
Sleeps 7, Remodel
Starting in mid \$400,000s**

Centrally located and steps away from activities including mini golf & tennis. Offers unobstructed views of the Continental Divide.



SHAWNEE

**3 Bed, 2 Bath, Fireplace
Sleeps 7, Remodel
Starting in high \$400,000s**

Overlooks the main YMCA campus and offers views of the Mummy Range and Teddy's Teeth.



COMING SOON

**New Remodeled Cabins
Coming Soon**

New cabins, offering a range of sizes and amenities, will be available soon—perfect for creating your own family tradition and memories.



NEW BUILD

**2 Bed, 1 Bath, Fireplace
Sleeps 5, New Construction
Starting in high \$400,000s**

Unique opportunity located in the Summit where peace and serenity surround this new build location.



HITALI*

**3 Bed, 2 Bath, Fireplace
Sleeps 7, Remodel
Starting in mid \$400,000s****

One of the best views from the YMCA! A secluded escape with rock outcroppings providing hours of fun for little ones.



AFTERMATH

**5 Bed, 3 Bath, Fireplace
Sleeps 12, Remodel
Starting in mid \$900,000s**

The porch wraps around two sides of the cabin. Nestled in the trees with views of Teddy's Teeth and Mt. Ypsilon.

**Dual adoption opportunity available to a family looking to share adoption.

START LIVING YOUR MOUNTAIN LIFE

When you adopt a cabin, YMCA of the Rockies builds or remodels the cabin to align with current guest standards. Cabin adoption is a philanthropic contribution.*

WHY ADOPT A CABIN?

- 25-year reservation booking priority*
- Built or remodeled for improved energy efficiency and sustainability
- Single or dual family adoption
- Immediate settlement or payment plan of up to 3 years

*Some related fees not tax deductible

SEE A PROPERTY MAP TO DRIVE BY AVAILABLE SITES TODAY!

To Inquire about cabin adoption prices and to schedule a tour, please contact:

Andrea Sherman, Cabin Adoption & Capital Projects Manager
asherman@ymcarockies.org; 970-586-3341 x6007

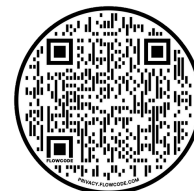


MEADOWVIEW

**4 Bed, 2 Bath, Fireplace
Sleeps 10, Remodel
Starting in high \$600,000s**

Two-story cabin located in the area of the YMCA known as "The Meadows" greenspace and home to plentiful wildlife.

**ASK US ABOUT AVAILABLE
CABINS AT
SNOW MOUNTAIN RANCH**



Scan to learn more or visit
ymcarockies.org/give



THE MOUNTAINS ARE CALLING... JOIN OUR TEAM.



SEASONAL JOBS

Work Agreements up to 8 Months

- Room & board packages plus pay
- Over 12+ departments
- Live next to Rocky Mountain Nat'l Park
- Networking & leadership opportunities
- Daily wildlife viewing
- Growth into full-time employment

YEAR-ROUND JOBS

Entry-Level to Executive Positions

- Health, dental, life insurance
- Generous PTO/ vacation
- Childcare assistance
- Participation in YMCA retirement plan
- Discounted nights at YMCA lodges
- Free or discounted gear rentals

YMCA OF THE ROCKIES

Surrounded by beautiful Rocky Mountain National Park in northwest Colorado, YMCA of the Rockies operates two globally known family resorts, residential camps for kids, and conference centers,

VOLUNTEER & INTERNSHIPS

- Volunteers receive complimentary room & board and flexible scheduling.
- Internships available in almost every department at both centers.
- Employee perks and fun environment

GAP PROGRAMS

- The three components of our two Gap Programs, Elevate and Discover, are employment experience, outdoor adventure, and community service.
- Multiple sessions available at Estes Park Center & Snow Mountain Ranch.



WWW.WORKINTHEROCKIES.ORG