



ADOPT A CABIN AT ESTES PARK CENTER

Cabins at YMCA of the Rockies are donated by amazing families and individuals just like you. Cabin adoption provides you and your family a way to build traditions for years to come while making it possible for other families to enjoy this same opportunity.

Special Opportunity in Historic Mineral Group

2 Bed, 1 Bath, Sleeps 4, New Construction Starting in the high \$300,000s

A small group of cabins ideally situated near the center of campus. These cabins are close to activities, but secluded enough to provide your quintessential mountain escape. Our most affordable option, these two-bedroom cabins sleep four and feature a cozy floorplan (648ft²). Contact us to tour future building sites.

Available cabins include Crystal and Granite.



Scan to learn more or visit
ymcarockies.org/give

View Available Cabins >>>

CABINS AVAILABLE FOR ADOPTION

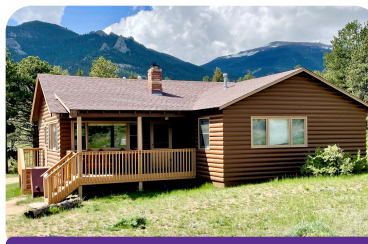
Pricing valid through May 31, 2025



TONOHUTU

**3 Bed, 2 Bath, Fireplace
Sleeps 7, Remodel
Starting in mid \$400,000s**

Centrally located and steps away from activities including mini golf & tennis. Offers unobstructed views of the Continental Divide.



SHAWNEE

**3 Bed, 2 Bath, Fireplace
Sleeps 7, Remodel
Starting in high \$400,000s**

Overlooks the main YMCA campus and offers views of the Mummy Range and Teddy's Teeth.



COMING SOON

**New Remodeled Cabins
Coming Soon**

New cabins, offering a range of sizes and amenities, will be available soon—perfect for creating your own family tradition and memories.



NEW BUILD

**2 Bed, 1 Bath, Fireplace
Sleeps 5, New Construction
Starting in high \$400,000s**

Unique opportunity located in the Summit where peace and serenity surround this new build location.



HITALI*

**3 Bed, 2 Bath, Fireplace
Sleeps 7, Remodel
Starting in mid \$400,000s****

One of the best views from the YMCA! A secluded escape with rock outcroppings providing hours of fun for little ones.



AFTERMATH

**5 Bed, 3 Bath, Fireplace
Sleeps 12, Remodel
Starting in mid \$900,000s**

The porch wraps around two sides of the cabin. Nestled in the trees with views of Teddy's Teeth and Mt. Ypsilon.

****Dual adoption opportunity available to a family looking to share adoption.**

START LIVING YOUR MOUNTAIN LIFE

When you adopt a cabin, YMCA of the Rockies builds or remodels the cabin to align with current guest standards. Cabin adoption is a philanthropic contribution.*

WHY ADOPT A CABIN?

- 25-year reservation booking priority*
- Built or remodeled for improved energy efficiency and sustainability
- Single or dual family adoption
- Immediate settlement or payment plan of up to 3 years

*Some related fees not tax deductible

SEE A PROPERTY MAP TO DRIVE BY AVAILABLE SITES TODAY!

To Inquire about cabin adoption prices and to schedule a tour, please contact:

Andrea Sherman, Cabin Adoption & Capital Projects Manager
asherman@ymcarockies.org; 970-586-3341 x6007

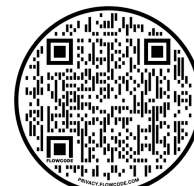


MEADOWVIEW

**4 Bed, 2 Bath, Fireplace
Sleeps 10, Remodel
Starting in high \$600,000s**

Two-story cabin located in the area of the YMCA known as "The Meadows" greenspace and home to plentiful wildlife.

**ASK US ABOUT AVAILABLE
CABINS AT
SNOW MOUNTAIN RANCH**



Scan to learn more or visit
ymcarockies.org/give